

SC SINGLEMODE ASSEMBLIES

Features

- **Low insertion loss**
- **Low Backreflection**
- **Pull-proof connector**
- **Compatible with NTT-SC hardware**
- **Compliant with ANSI, Bellcore, IEC, NTT, EIA/TIA and JIS.**
- **Corrosion resistant body**
- **UL-rated plastic housing, boot and cable**
- **SMF-28 fibre or equivalent**

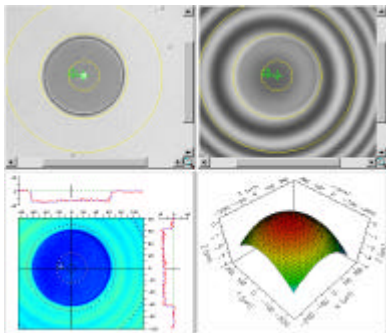
SPECIFICATIONS

Insertion Loss (1300nm and 1550nm)
0.30dB max. <0.10dB Typ.
IEC-61300-3-4 Method B

Return Loss (1300nm and 1550nm)
>50dB min. ; >55dB Typ.
IEC-61300-6

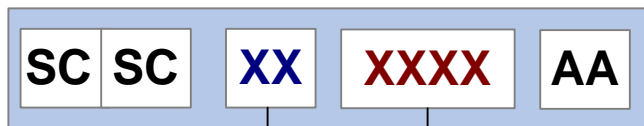
End-face Geometry

Radius of curvature: 10mm – 24mm
Apex Offset: < 50µm
Fibre Height: ± 50nm



PRODUCTS

SC patchcords and pigtails terminated on the following cable sizes



CABLE (XX)

26	250µm (primary-coated) fibre
11	900µm (secondary-coated) fibre
10	1.6mm Duplex fig. 8 zipcord
07	2.0mm Simplex
13	2.0mm Duplex zipcord
01	3.0mm Simplex
06	3.0mm Duplex zipcord
08	Other

LENGTH

Meters: Length in 1/10th meters.
eg. 0025 = 2.5m

CHARACTERISTICS

- 100% Interferometer testing. Results recorded
- 100% Insertion loss and return loss testing. Results recorded
- Tracability serial number on every cable assembly
- Cable retention > 150N



DESCRIPTION

The SC is a push-pull connector offering greater packing density than bayonet and screw type connectors.

The ferrule is free-floating and is thus independent of the backbone, so that pull on the cable will not cause a disconnection from the mating connector.

Fibrepulse SC assemblies are fully compatible with NTT-SC type products. The connector is ANSI, Bellcore, IEC, TIA/EIA, NTT and JIS compliant.

Fibrepulse cable assemblies are manufactured using a patented assembly process, which results in reduced stress on the fibre as caused by traditional assembly processes.

The benefits are best seen at high wavelengths and DWDM applications.

All assemblies are made to UPC standards.

Fibrepulse SC cable assemblies conform to the Telcordia GR-000326-CORE specification.

Standard colours for the connector housing and strain relief boot are blue. Other colours are available upon request.

